



Phone (847) 826-2706  
Email [info@maxtracktime.com](mailto:info@maxtracktime.com)  
Web [www.MaxTrackTime.com](http://www.MaxTrackTime.com)

## Circuit of the Americas Testing Event – December 3, 2026

### Load-In & Schedule

**Waivers & Driver Info** All participants must complete the [COTA Electronic Waiver](#) and the [Max Track Time Driver Info & Electronic Waiver](#) prior to arrival. The team captain/registrant is expected to distribute this waiver to all drivers and crew.

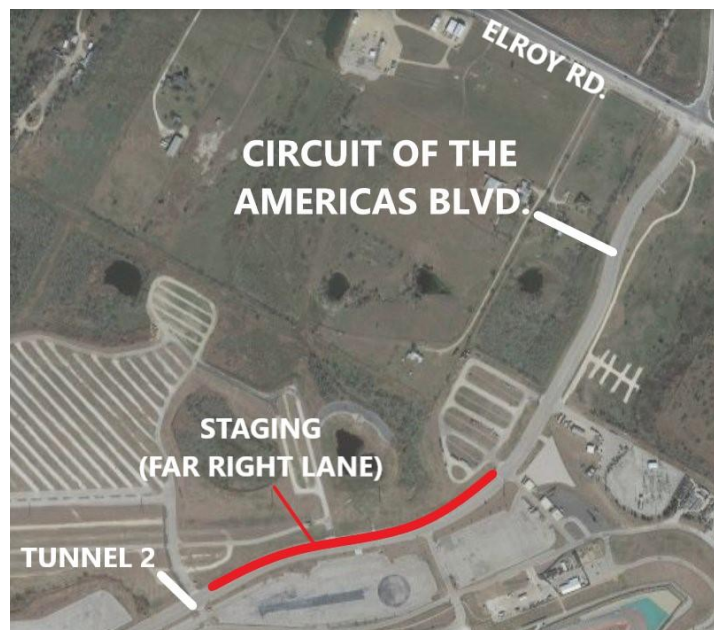
**Early Arrivals** Teams arriving on Tuesday may pre-stage their equipment in COTA Lot R across the street from the main entrance on Elroy Rd. Please contact COTA security at (512) 655-6220 to unlock the gate in lot R for pre-staging.

**Load-In** Assisted load-in will be on Wednesday, December 2<sup>nd</sup> 6:00 PM - 9 PM. Teams must be in place by 5:00 PM for 6:00 PM load-in. Max Track Time participants may park their race cars, haulers, and street vehicles in the COTA paddock (see Facility/Paddock Maps section). Prior to load-in, teams may stage their trucks in the far-right lane on Circuit of the Americas Blvd. starting at 11 AM on Wednesday. All load-in must be done through tunnel 2 via COTA Blvd. No entry through tunnel 1 will be allowed during the Max Track Time event.

Teams arriving after 11:00 PM on Wednesday must contact Max Track Time at (847) 826-2706 prior to arrival to gain entry. Entry after 11:00 PM will be through tunnel 1.

*Note: WRL load in will begin at 3 PM on Thursday, December 3<sup>rd</sup>. Please ensure your rig/equipment is setup in the space you intend to use during the race weekend and is not occupying additional spaces.*

### COTA Staging Diagram





Phone (847) 826-2706  
Email [info@maxtracktime.com](mailto:info@maxtracktime.com)  
Web [www.MaxTrackTime.com](http://www.MaxTrackTime.com)

**Load-Out** All drivers/teams not participating in the WRL weekend must exit the COTA paddock by 7:00 PM.

**Garages** all Max Track Time participants planning to utilize the pit lane garages must also have a garage reserved for the WRL weekend and will be assigned based off that team's assigned location for the weekend.

**RV Camping Reservations** Teams wishing to camp at the track on Wednesday night must reserve their spot in the [COTA RV Park](#) through the track [here](#). For teams wishing to camp throughout the weekend, please contact [WRL](#).

**Electrical Access** Any teams wishing to utilize paddock electrical plug ins for trailers and haulers must purchase access through the track. Please contact [Alicia.Prilipp@thecircuit.com](mailto:Alicia.Prilipp@thecircuit.com) to reserve your spot. Please include Max Track Time 12/3/2026 Electrical Access in your subject line.

**Registration/Driver's Meeting** Registration and a short drivers meeting will be hosted in Suite 205 above the garages on Thursday, December 3<sup>rd</sup>. Registration will be open from 7:00 AM – 7:30 AM in Suite 205 with the **Mandatory Drivers & Managers Meeting at 7:30 AM**. If a driver misses the driver meeting, a second meeting will be held at 9:00 AM. Half-day registration will open at 12:00 PM in Suite 205 with a **Mandatory Drivers & Managers Meeting at 12:30 PM**. All participating drivers must sign in and present or sign the provided waivers at check in. **Please See Minor Driver section below for drivers under 18 years of age.**

### Event Schedule

7:00 AM – Registration/Check In – (Suite 205)  
7:30 AM – **Mandatory Full-Day Drivers & Managers Meeting** – (Suite 205)  
8:00 AM – 8:30 AM – Sighting Laps (35 MPH Maximum. No Race Cars)  
8:30 AM – 12:00 PM – Open Track (Registered Cars/Drivers Only. No Passengers)  
12:00 PM – 1:00 PM – Catered Lunch (Suite 205)  
1:00 PM – 5:00 PM – Open Track (Registered Cars/Drivers Only. No Passengers)

### Half Day Schedule

12:00 PM – Half-Day Registration/Check In (Suite 205)  
12:30 PM - **Mandatory Drivers & Managers Meeting** – (Suite 205)  
1:00 PM – 5:00 PM – Open Track (Registered Cars/Drivers Only. No Passengers)



**Phone** (847) 826-2706  
**Email** [info@maxtracktime.com](mailto:info@maxtracktime.com)  
**Web** [www.MaxTrackTime.com](http://www.MaxTrackTime.com)

## Event Requirements

**Cars** Entrants are expected to prepare their car for the duties of track driving to the minimum standard outlined in our [Tech Sheet](#). Should a car be suspected of not being safe for track use, the organizers reserve the right to deny track access at any point during the event. For questions about eligibility, please contact [info@maxtracktime.com](mailto:info@maxtracktime.com).

**Drivers** All drivers in race cars must have full racing gear including: Nomex Suit, SA2015/FIA2018 or newer Helmet, Racing Shoes, Balaclava, Nomex Socks, HANS device or comparable neck protection. Street car drivers must have a helmet meeting the above specification, long pants, and closed toed shoes. HANS devices are required in street cars with racing harnesses. Failure to have appropriate driving gear will result in denial of track access until appropriate gear is obtained.

**MINORS** Minors aged 16-17 are permitted to drive provided they have filled out our [minor waiver](#). A legal parent or guardian must either be present, or have the waiver signed, notarized, and presented at the event for the minor to participate.

## Track Rules

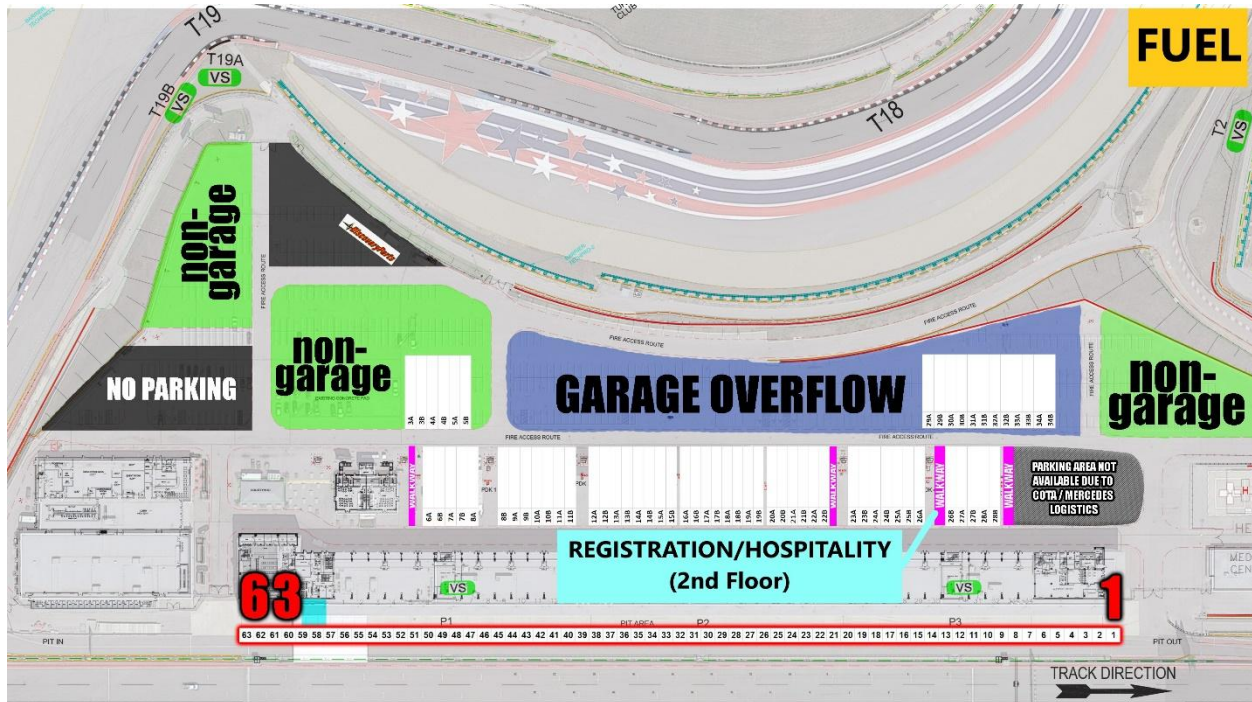
Any scooters must have an affixed and appropriate seat to be operated in the paddock.

All attendees wishing to enter the hot pit area must wear long pants and closed-toed shoes. Improper attire will bar entrants from pitlane.

Minors wishing to be in the pit area, garage area, trackside communications stations, and any other location defined as the "Track Area" must also sign the minor waivers.

**TRACK DAMAGE** Drivers/teams are financially responsible for any damage that they cause to racetrack property including, but not limited to, tire barriers guard rails and posts. Additionally, any absorbent material used to clean up after spills or fire suppression equipment expended will be billed to the driver of the car. Teams are required to place pads or boards below any jacks, trailer landings, or motorcycle kickstands in the paddock. Failure to do so will result in fees to repair the damaged asphalt.

## Paddock Map



**Fuel** COTA stocks VP 89, 93, and 100 octane fuel at their on-site fuel station. The pumps accept credit card and cash and will be open from 7:00 AM – 3:00 PM.

For teams ordering fuel, the fuel will be available for pickup at the fuel island. Circuit of the Americas does not offer drayage of teams ordering fuel to the track. Please contact Max Track Time at (847) 826-2706 if you require assistance in retrieving your fuel from the fuel island. Teams ordering fuel to the track must take the barrel with them at the culmination of the event.

**Tire Support** Continental Tire will support tire changes for our event beginning on Thursday, December 3<sup>rd</sup> at 10:30 AM.

**Nitrogen/Air** Circuit of the Americas will stage all nitrogen/air deliveries in the back paddock near the Safety Kleen building.

**Water Barriers for Canopies** Any teams requiring water barriers for their awnings may reserve these through United Rentals. Please contact Paul Watson at (512) 956-1312 to order.





**Phone** (847) 826-2706  
**Email** [info@maxtracktime.com](mailto:info@maxtracktime.com)  
**Web** [www.MaxTrackTime.com](http://www.MaxTrackTime.com)

**Packages / Shipping** Any packages shipped to the track will be available for pickup at the shipping/receiving building in the south paddock opposite Tunnel 1 between the hours of 7:30 AM – 6:00 PM each day of the event.

Shipping Address:

[Team name / Max Track Time / Phone number]

9201 Circuit of the Americas

Blvd, Austin TX 78617

**Parts/Gear Support** [Discovery Parts](http://discoveryparts.com) will be supporting our event. If any will-call items are needed, please let them know by Wednesday, November 25, 12:00 EST.

Contact Phone: 706-344-1235

Our #1 category for Max Track Time Members:

<https://discoveryparts.com/collections/closeout-products>

## MEDICAL INFORMATION

**Facility Medical** There will be a staffed ambulance on site for the duration of the event. In the event of an emergency, please alert COTA or Max Track Time staff. The ambulance will be dispatched to your location.

Nearest Hospital:

Trauma Level 2:

St. David's Medical Center

919 E 32<sup>nd</sup> Street

Austin, TX 78705

Trauma Level 1:

Dell Seton Medical Center at The University of Texas

1500 Red River Street

Austin, TX 78701